

**SUNLABOB LED BULB SPOTLIGHT SP50**



<b>Model Name</b>	<b>LED Spotlight</b>
<b>Model No.</b>	<b>SP50</b>
Power Consumption	3W
Luminous Flux	190lm
Working Voltage	12VAC/DC, 85-264VAC
Life Spam	>50,000 Hours
Base	E27,E26,E17,E14,E12,GU10
Certificates	CE, ROHS, UL
<b>Warranty</b>	<b>36 Months</b>

Apply to homes, shopping centers, conference rooms, display counters lighting and decoration, usually installed in the canister lamp case(minimum 2.5 inch).

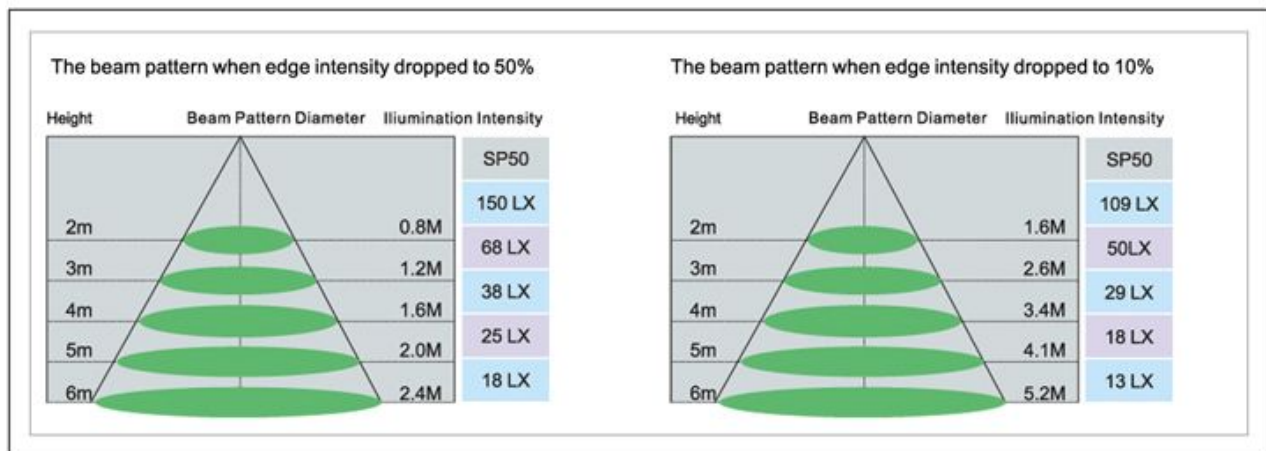
**Main Specifications:**

Model Number	Sunlabob SP50
Model Name	LED Light Bulb
Dimension	Dia 50 x 71mm
Emission Color	Pure White, Warm White (Red, Yellow, Green and Blue optional)
Color Temperature	Pure White: 5,000 – 7,000K, Warm White: 3,000 – 4,000K
CRI	Ra degrees 70
Luminescence Angle	30 degrees
Lumens	190 lm
Working Voltage	85-264VAC or 12VAC/DC
Power Consumption	3W
Lamp Lens	Acryl
Lamp Cup Radiator	Alloy Aluminum Plating
Lamp Base	E27,E26,E17,E14,E12,GU10
Certification	CE, ROHS, UL

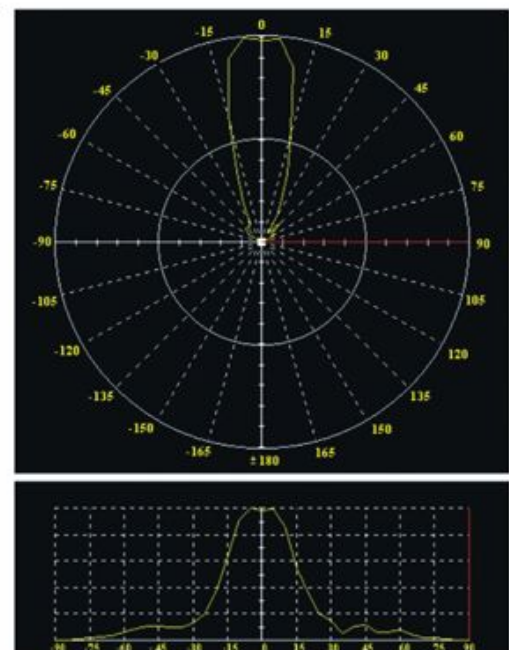
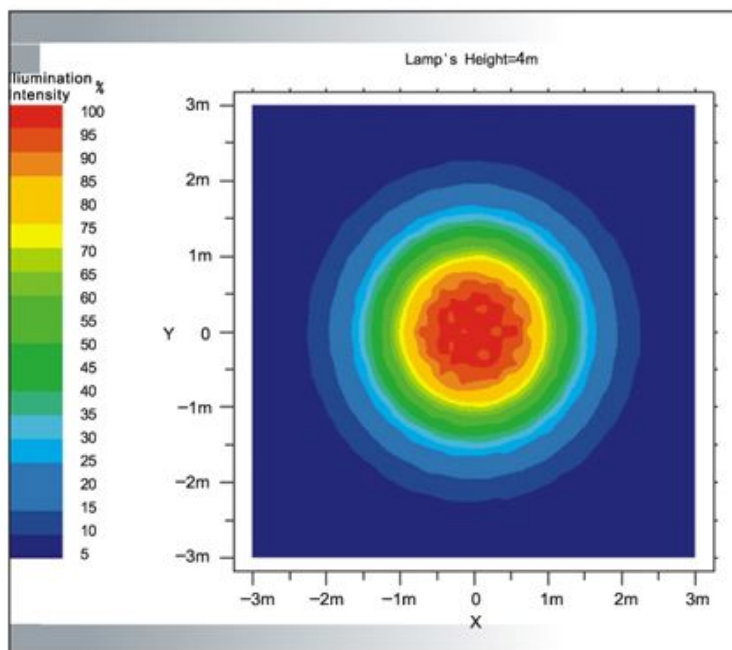
# Photometric Performance

The beam pattern can be controlled within 30 degrees, reducing the brightness loss furthest, applying with different topical lighting requirements, can be used for Office, Commercial and Home lighting.

## ◆ The Different Height Illumination Distribution



## ◆ Plane Equiluminous Distribution (Beam Pattern) ◆ Distribution Curve





## **Special Features:**

With proprietary optical technology, high beam pattern definition and brightness uniformity.

**Unique Integrated Lens and Lampshade Design:** The lens have both light focus and protection LED protection function, avoid the brightness wastage, let the product looks more concise beauty.

**Creative High Power LED Planar Combine Packaging, Radiator and Lamp holder Integration:** Fully protect LED life and heat dissipation requirements, satisfied with the structure and design of LED Lights fundamentally, which the most distinctive features of LED Lights.

**Tremendous Energy Saving:** Used the ultra high power, high brightness LED light source, together with the high power efficiency power supply, which can save energy up to 80% than the conventional incandescent lamps, under the same power consumption, the brightness is 8 times than the traditional incandescent lamps.

**Long Life, Up to 50,000 Hours, 50 times than the conventional tungsten wire lamp:** Used highly reliable, advanced LED packaging technology - Eutectic Welding, fully guaranteed the LED long life.

**No Strobe Flashing:** Working under DC, eliminate the tireless which caused by the traditional strobe flashing.

**Green and Environmental Protection:** no lead, no mercury, no environmental pollution.

**Impact Resistance, Shock-proof, Without Ultraviolet (UV) and Infrared (IR) Radiation:** No filament and glass frames, avoid break of the traditional lamp, without harm to the human body.

**Work under Low-voltage and Low-Heat, Safe and Reliable:** The surface temperature is less than ( $T_a=25$  degrees ambient temperature). Adopting the PWM constant-current technology with high efficiency, low heat and high precision constant current, Global Wide Working Voltage, with constant-current under 85-264VAC entire voltage range, the brightness and lifetime will be not influenced by the voltage fluctuations.

**Reduced Line Loss, No Pollution to Power Network:** Power factor  $\geq 0.9$ , THD  $\leq 20\%$ , EMI apply with the global universal index, reduce the power loss and transmission lines to avoid contamination of the network of high frequency interference.

**Various Universal standard bases:** can replace the halogen, incandescent and fluorescent lamp directly.

**High brightness efficiency:** up to 80lm/w, various color temperature optional, High Color Index, Nice Coloration.